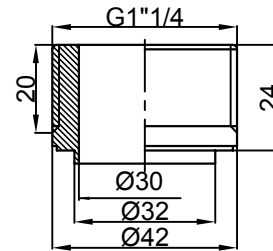


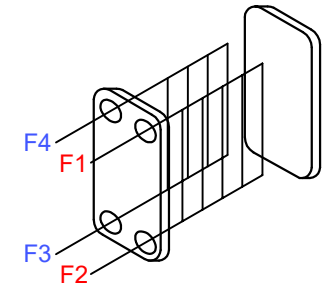
G1"1/4 Connection(L017C)

F1 F2




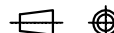
F3 F4 нагреваемая сторона: F3 вход, F4 выход

F1 F2 греющая сторона: F1 вход, F2 выход



Design pressuer(MPa)	4.5
Testing pressuer(MPa)	6.7
Design Temperature(°C)	-196~+200°C
Label Code	

FHT5433-045		100	242±5	F1F2side:5.55;F3F4side:5.44	22.00	5.88
FHT5433-044		90	219±3	F1F2side:5.00;F3F4side:4.88	20.12	5.28
FHT5433-043		80	196±3	F1F2side:4.44;F3F4side:4.33	18.24	4.68
FHT5433-042		70	173±3	F1F2side:3.89;F3F4side:3.77	16.36	4.08
FHT5433-041		60	151±3	F1F2side:3.33;F3F4side:3.22	14.48	3.48
FHT5433-040		50	128±3	F1F2side:2.78;F3F4side:2.66	12.60	2.88
FHT5433-039		40	105±2	F1F2side:2.22;F3F4side:2.11	10.72	2.28
FHT5433-038		30	83±2	F1F2side:1.67;F3F4side:1.55	8.84	1.68
FHT5433-037		20	60±2	F1F2side:1.11;F3F4side:1.00	6.96	1.08

Drawing No.	Customer Part No.	Plate No.	A(mm)	Volume(L)	Weight (kg)	Heat transfer area(m ²)
Connection vertical degree: ±2°				Plate material: 316L		
				Connection material: 304		
				Cover plate material: 304		
						SNB060-N-4.5-H F1F2F3F4(G1"1/4)
Mark No.	Change file No	sign	Date			
Design	XUZH	Standard		View	Scale	Size
Check		Approved			1:5	
Review		Edition	A/0			
Process		Date	20220505			